



ME3 Polyclonal Antibody

| | |
|---------------------------|--------------------------------------------------------------------------------------------------------------------------------------------------------------------------------------------------------------------------------------------------------------------------------------------------------------------------------------------------------------------------------------------------------------------------------------------------------------------------------------------------------------------------------------------------------------------------------------------------|
| Catalog No | YP-Ab-02674 |
| Isotype | IgG |
| Reactivity | Human;Mouse |
| Applications | WB;IHC;IF;ELISA |
| Gene Name | ME3 |
| Protein Name | NADP-dependent malic enzyme mitochondrial |
| Immunogen | The antiserum was produced against synthesized peptide derived from human ME3. AA range:545-594 |
| Specificity | ME3 Polyclonal Antibody detects endogenous levels of ME3 protein. |
| Formulation | Liquid in PBS containing 50% glycerol, 0.5% BSA and 0.02% sodium azide. |
| Source | Polyclonal, Rabbit,IgG |
| Purification | The antibody was affinity-purified from rabbit antiserum by affinity-chromatography using epitope-specific immunogen. |
| Dilution | WB: 1/500 - 1/2000. IHC: 1/100 - 1/300. ELISA: 1/40000.. IF 1:50-200 |
| Concentration | 1 mg/ml |
| Purity | ≥90% |
| Storage Stability | -20°C/1 year |
| Synonyms | ME3; NADP-dependent malic enzyme; mitochondrial; NADP-ME; Malic enzyme 3 |
| Observed Band | 67kD |
| Cell Pathway | Mitochondrion matrix. |
| Tissue Specificity | Expressed predominantly in organs with a low-division rate. |
| Function | catalytic activity:(S)-malate + NADP(+) = pyruvate + CO(2) + NADPH.,cofactor:Divalent metal cations. Prefers magnesium or manganese.,similarity:Belongs to the malic enzymes family.,tissue specificity:Expressed predominantly in organs with a low-division rate., |
| Background | Malic enzyme catalyzes the oxidative decarboxylation of malate to pyruvate using either NAD ⁺ or NADP ⁺ as a cofactor. Mammalian tissues contain 3 distinct isoforms of malic enzyme: a cytosolic NADP(+)-dependent isoform, a mitochondrial NADP(+)-dependent isoform, and a mitochondrial NAD(+)-dependent isoform. This gene encodes a mitochondrial NADP(+)-dependent isoform. Multiple alternatively spliced transcript variants have been found for this gene, but the biological validity of some variants has not been determined. [provided by RefSeq, Jul 2008], |



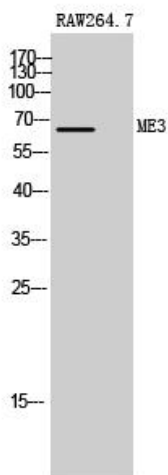
matters needing attention

Avoid repeated freezing and thawing!

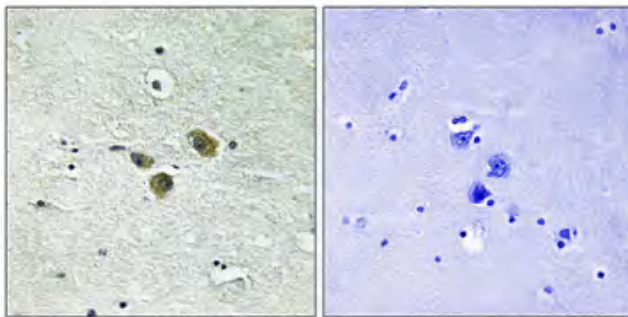
Usage suggestions

This product can be used in immunological reaction related experiments. For more information, please consult technical personnel.

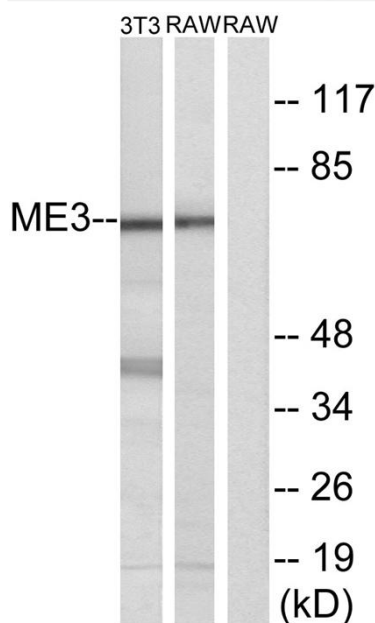
Products Images



Western Blot analysis of RAW264.7 cells using ME3 Polyclonal Antibody



Immunohistochemical analysis of paraffin-embedded Human brain. Antibody was diluted at 1:100(4° overnight). High-pressure and temperature Tris-EDTA,pH8.0 was used for antigen retrieval. Negative control (right) obtained from antibody was pre-absorbed by immunogen peptide.



Western blot analysis of lysates from RAW264.7 and NIH/3T3 cells, using ME3 Antibody. The lane on the right is blocked with the synthesized peptide.